

**CITY OF GRANTVILLE
CITY COUNCIL WORK SESSION MEETING AGENDA
APRIL 12, 2021 at 6:30 P.M.
Glanton Municipal Complex
City Council Chambers
123 Lagrange Street
Grantville, Georgia 30220**

Meeting will be available by Audio Conference Dial: 425-436-6364 Access Code: 336977#

Call to Order
Invocation
Pledge of Allegiance
Citizen Comment Regarding Agenda Items
Approval of Agenda

Public Hearing: Resolution No. 2021-02 Fee Schedule for City Services (Public Hearing will be held on April 26, 2021)

Discussion/Decision on Request to Rezone Parcel ID G04-002-001 0.93 AC, 54 Church Street from R-20 Single Family Residential zoning to General Commercial (GC) zoning. Planning Commission recommends approval

Discussion/Decision on Storm Water Drainage Problem on Lagrange Street

Discussion/Decision on Report and Proposal from Global Control Systems

Discussion/Decision on Proposals from Southern Power Systems Services, Inc for Generators for Lift Stations

Discussion/Decision on Request to Amend Comprehensive Plan Land Use Character Area Map for Parcel ID G08 2247 001 to change the Future Land Use from Developing Residential to Industrial. Planning Commission recommends denial.

Discussion/Decision on MEAG Power's 2020 Year-End Settlement

Discussion/Decision on Proposal from Aqua Dynamics, Inc for Pavilions at Post Street and Griffin Street Parks

Discussion/Decision on Resolution No. 2021-01 Approving and Adopting a Schedule of Fees for Development Services and Residential and Non-Residential Building Services

Discussion/Decision on Resolution No. 2021-02 Approving and Adopting a Schedule of Fees for City Services

First Reading: Ordinance No. 2021-02 to Restate and Amend Section 11-21 of the Code of Ordinances

Second Reading: Ordinance No. 2021-01 City observed City Holidays

Discussion/Decision on Letter to Sallie Coleman, Electric Cities of Georgia (ECG): Opt Out of Paying for Economic and Community Development (24 month notice) Administrative Committee recommendation to sign and send or not to sign and send

Discussion/Decision on Quitclaim Deed to Doug Phillips for property at 60 Edmond Leigh Circle

Announcements

Initial Notice 2021 Municipal Gas Authority of Georgia Annual Election (no action required)

Citizen Comments

City Council and Staff Comments

Adjournment

THE CITY OF GRANTVILLE, GEORGIA

**RESOLUTION NO. 2021-02
BEFORE THE CITY COUNCIL**

**A RESOLUTION APPROVING AND ADOPTING A
SCHEDULE OF FEES FOR CITY SERVICES**

WHEREAS, the Schedule of Fees for City Services presently utilized are outdated, do not comport with the current economic realities and not reflective of the cost incurred for the services provided.

NOW, THEREFORE, BE IT RESOLVED by the City Council of the City of Grantville, that the Schedule of Fees for City Services listed in Exhibit A attached hereto and incorporated herein as if set forth verbatim are approved and adopted for the City of Grantville.

This Resolution is passed this 26th day of April 2021.

Doug Jewell, Mayor

ATTEST

Roberta Higgins, City Clerk

City of Grantville

Grantville Rate/Fee Schedule

Resolution 2021-02 Exhibit A

ANIMAL CONTROL FEES

Impound Dogs	\$30 Initial pickup and Impound per dog \$18 each additional day Impounded
2 nd Offense	\$75 Per dog
3 rd Offense	\$150 Per dog

* Animals requiring vet services, owner will be responsible for all associated Cost prior to release of animal.

CEMETERY FEES - ANNEX A

Fee Schedule for the Purchase of Burial Plots - Annex A Grantville Cemetery

MUST SHOW PROOF OF RESIDENCY

Grantville City Resident:	\$500.00 per 5' x 11' Plot
Coweta County Resident:	\$750.00 per 5' x 11' Plot
Outside Coweta County:	\$1000.00 per 5' x 11' Plot

Plots shall be sold in increments of TWO (2) in Blocks H - R.

* Only Block G of Annex A shall be sold singularly.

Cemetery Deed Recording Fee	\$25
Cemetery Marker Placement Permit Fee	\$15

COURT FEES

Expungements (Each)	\$20
Certified Copies (Each)	\$3
Official Copies (Per page)	\$0.10
FTA Fee (Failure to Appear)	\$150
Contempt Charge	\$50
Video	\$10

FACILITIES RENTALS (CURRENTLY CLOSED)

Freight Depot

Four Hours- Rental Fee	\$50
Eight Hours- Rental Fee	\$100
\$100 Refundable Deposit	

Clements/Malcolm Recreation Building (when available)

Resident \$10 per hour	\$25 Refundable Deposit
Non-Resident \$25 per hour	\$25 Refundable Deposit

Grantville Community Center/Splash Park

Resident \$10 per hour	\$25 Refundable Deposit
Non-Resident \$25 per hour	\$25 Refundable Deposit

Water Pads are Not available for private rental

Pavilion Griffin Street - First come first Serve

*For rental at any facility, the deposit has to be PAID before the reservation date is booked.

OCCUPATIONAL TAXES

Occupational Tax Rates (Based on gross Receipts)

Class 1	1.00%
Class 2	1.33%
Class 3	1.66%
Class 4	2.00%
Class 5	2.33%
Class 6	2.66%

*Plus \$75 Administrative Fee

Payment is due each year within 30 days of January 1st. If unpaid within 90 days, on April 1st, a Penalty of 10% of the tax or fee due, plus Interest at a Rate of 1.5% per month thereafter will be assessed.

MISCELLANEOUS FEES

Credit Check Fee	\$15
Late Fee (Added at 8:00AM the morning of the next business day after the 15 th of each month)	\$25
Reconnect Fee (if not paid in full on the 24 th of the month)	\$25
Returned Check Fee	\$30
Re-Read Fee	\$25
Garbage Pickup (billing on utility bill)	\$14.18
Extra Garbage Can (per month)	\$9.73
Special Event Permit Fee	\$25
Parade/Assembly Permit Fee	\$25
Sign Permit	\$25
Copies (per page)	\$0.10
Fax (per page)	\$1
Copies of Meeting Recordings (Per Disk)	\$2
Notary (per page notarized)	\$2
Open Records Request	Associated Costs
Motorized Cart Permit	\$25
Retail Beer and Wine License Fee	\$250 each
Retail Liquor License Fee	\$5000
Beer and Wine Consumption on premises	\$525
Distilled Spirits (liquor) Consumption on premises	\$2000
Certificate of Appropriateness Application (Historical Preservation Commission)	\$20

UTILITY DEPOSITS - based on a Transunion credit check ordered by the Clerk on the date of application for the new account. The Deposit amount is credited to the account upon initial account set up and applied to the final bill when the account is closed.

<u>Service</u>	<u>Basic Deposit</u>	<u>Double Deposit (due to credit check)</u>
Electric	\$100	\$200
Water	\$50	\$100
Gas	\$100	\$200

Utility Deposits are \$250 or \$500 for all services; some locations are not serviced by all utilities. The above Utility Deposits are based on services that Grantville provides. Utility amounts per service are as listed above.

UTILITY TAP AND CUT-IN FEES

Residential

Gas Tap	
Without road or other bore	\$500 (plus cost of trenching)
With road bore	\$650 (plus cost of trenching)
Water Tap (fee update effective 9/28/2020)	
Water Tap (up to 1 Inch):	\$2,500
Water Tap (up to 1 Inch) w/Road Bore:	\$2,500 Plus Cost of Bore
Sewer Tap (up to 6 inches)	\$3000
Electric Cut-In Fees	
Up to 200 AMP overhead	\$350
Underground	\$2000 down payment; plus Final Bill at Cost

Commercial

Commercial all other taps and cut-ins not listed will be made At Cost; Labor and Materials, plus 10%.

Yard light install will be AT COST TO INSTALL and then the regular monthly fee.

Updated 4/8/2021

Brennan Jones Engineering Associates, LLC

7513 Mason Falls Dr., Winston, Georgia 30187
(p) 770.688.5148 (f) 770.577.0300

Memorandum

To: Al Grieshaber, Jr., City Manager
From: Brennan D. Jones, P.E., Zoning Administrator
cc: Mayor & City Council
Robi Higgins, City Clerk
Date: April 2, 2021
Re: April 1, 2021 Planning Commission Meeting Recommendations

The Planning Commission met on April 1, 2021. The meeting agenda and minutes from the Planning Commission Meeting are attached for review. Below are the items that were on the agenda and actions taken by the Planning Commission concerning the items.

1. Comprehensive Plan Land Use Character Area Map Amendment to change the Character Area Map use from Traditional Residential to Downtown for Parcel ID G04-0002-001, 0.93 AC, and Rezoning Application to change the zoning map district from R-20 Single Family Residential to General Commercial (GC) for 54 Church St G04-0002-001, 0.93 AC.

The Planning Commission voted to recommend approval of the rezoning application for 54 Church St G04-0002-001, 0.93 AC, to change the zoning map district from R-20 Single Family Residential to General Commercial (GC). The Planning Commission Vote was 3-0.

No action was taken by the Planning Commission on the Comprehensive Plan Future Land Use Character Area Map amendment.

END OF MEMORANDUM

Doug Jewell

From: Brennan Jones <brennanjones@comcast.net>
Sent: Tuesday, June 12, 2018 9:47 PM
To: Doug Jewell
Cc: Lynn Basham
Subject: FW: Storm Water Drainage Problem on Lagrange Street

From: Al Grieshaber [mailto:agrieshaber@grantvillega.org]
Sent: Tuesday, June 12, 2018 5:06 PM
To: Brennan Jones
Subject: RE: Storm Water Drainage Problem on Lagrange Street

Thank you, Al

From: Brennan Jones [mailto:brennanjones@comcast.net]
Sent: Tuesday, June 5, 2018 8:55 PM
To: Al Grieshaber <agrieshaber@grantvillega.org>
Subject: RE: Storm Water Drainage Problem on Lagrange Street

Al,

I conducted a reconnaissance visit to the site with Mayor Jewell. The City's policy has been that the City only maintains storm drainage systems located within the public right of way. This drainage system crosses private property from Moreland Street to Lagrange Street and beyond. The original drainage in the area was an open ditch and I understand that private property owners piped the ditch and placed fill to convey drainage across the property and to increase the usable area of the parcels. The storm drain is fairly old based on a report by a bystander, (i.e. more than 30 years in most places), and the majority of the pipe is constructed of un-coated corrugated metal pipe material. Based on my experience, this type of piping has a service life of 30-years if it carries a base flow – which appears to be the case here. There are multiple signs of piping failures that are creating sinkholes along the pipe route. One such sink hole is developing beneath the pavement northern edge of pavement on Moreland Street. Other holes are present near yard inlet structures. The piping system will likely need to be replaced to correct deficiencies. I recommend the following course of actions:

- 1) Determine the extents of the piping network and perform an inspection to decide on project limits. There are locations where piping from multiple directions enters the drainage system at yard inlet structures.
- 2) Determine if the City has a drainage easement that has been documented and recorded. The City has performed maintenance on the drainage system in the past on multiple occasions and based on this fact, I believe that there is a prescriptive easement and the City has accepted maintenance of the piping system.
- 3) Perform a survey of the piping system from LaGrange Street to the railroad right of way. This survey should include property boundary line locations in addition to the storm drainage piping system. This survey should be used to document the City's easement for the drainage system.
- 4) Obtain from property owners a drainage system easement and record the easement at Coveta County Courthouse for public record.
- 5) Design new drainage system to replace the existing pipeline, Bid and Construct improvements to replace the system.

After project limits have been defined a preliminary budget for design and construction of the improvements can be developed. For the initial investigation and surveying, I recommend establishing a budget of \$7,500. The majority of this budget is for the surveying of the system and property boundary surveying that will be required to define the assessment area in relationship to affected properties.

Kind Regards,

Brennan

From: Al Grieshaber [<mailto:agrieshaber@granvillega.org>]
Sent: Friday, May 25, 2018 4:47 PM
To: Brennan D. Jones - Brennan Jones Engineering Associates , LLC (brennan.jones@corncast.net)
Cc: Joan Henry; Ronald Owens; Doug Jewell; Doug Jewell (roller125@yahoo.com)
Subject: Storm Water Drainage Problem on Lagrange Street

Brennan,

Today the Mayor and Ron talked to me about a storm water drainage problem on Lagrange Street (behind the two houses across from the Dollar General, 49 Lagrange Street). Apparently, the problem has existed for years and causes a sinkhole which gets filled by the City periodically. Exacerbating the problem (according to Ron) is a natural spring in the area. We have storm water drainage lines in the area. However, we need to plan a permanent fix for the problem: be it to open cut the area, lay new pipe and associated structures; line the pipes or slip sleeve them. All this is said, to request, at your convenience, to look at the situation and suggest what may be appropriate. We may have to undertake a major storm water project in the area.

Thanks, Al









Robi Higgins

From: DARWIN PALMER <bocastle@bellsouth.net>
Sent: Tuesday, April 06, 2021 6:03 PM
To: Robi Higgins



Side of Moreland st at 90 degrees turn. You can see tire track going into grate. Thanks for fixing but the structure can not withstand any vehicle and will be broken repeatedly until it is substantially rebuilt.

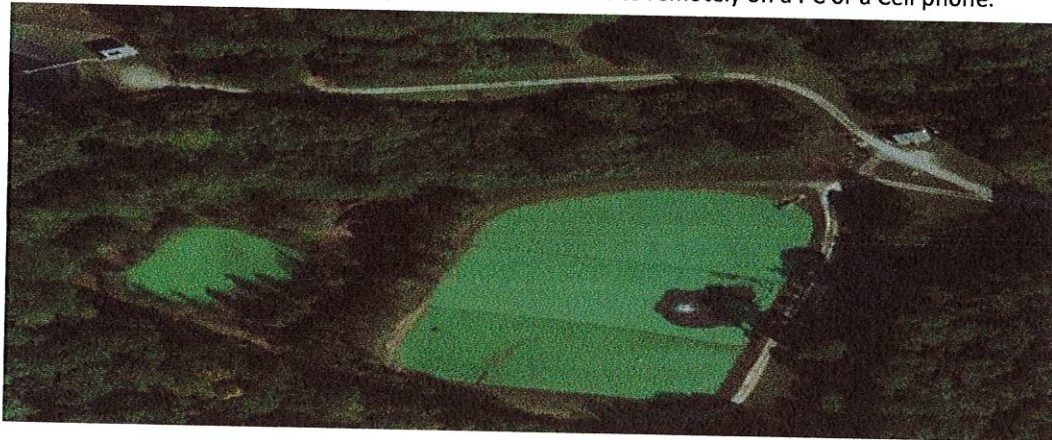
Sent from my iPhone

City of Grantville Pump Station Visit Field Report – 02/25/2021

1. At City Hall Tower PRV Control Site: Verbatim Auto Dialer is outdated and needs to be replaced with Mission SCADA MIDRO850 unit with Tank and Well Package software. This will give the operator the capability to Open / Close a valve at the Bexley and also Start/Stop a Chemical Pump using a PC with internet or from a Cell phone or Automatically using operator adjustable setpoints. The Tank and Well Package software will make sure that once you send a command you will get a positive confirmation that another site has received your command.



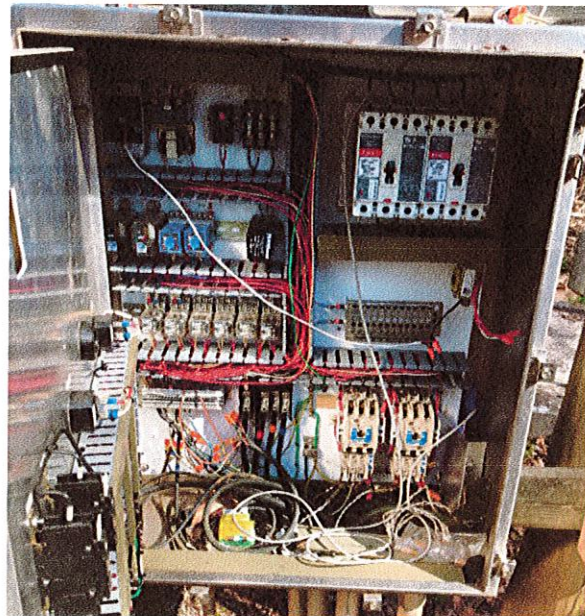
2) The Aerator Site: The existing SCADA package PLC and XYCOM door-mounted HMI are not working and have reached the end of the life cycle. GCS Inc. is proposed to use the existing cabinet and hardwires to connect to new AUTOMATION Direct Productivity 3000 Series PLC and C-MORE 10" Color Touch panel. GCS Inc also proposed to add a new Mission SCADA unit so that you can monitor this site remotely on a PC or a Cell phone.



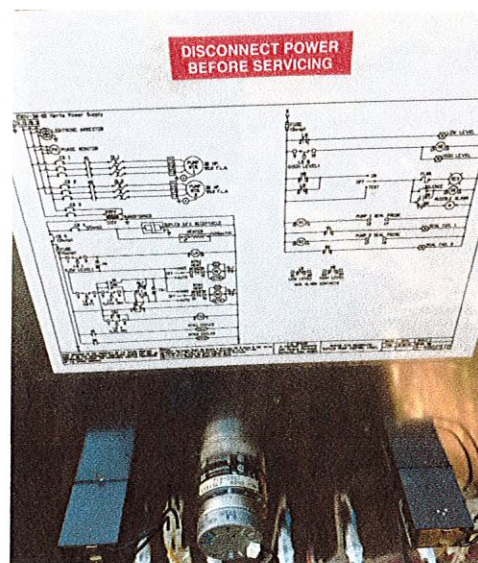
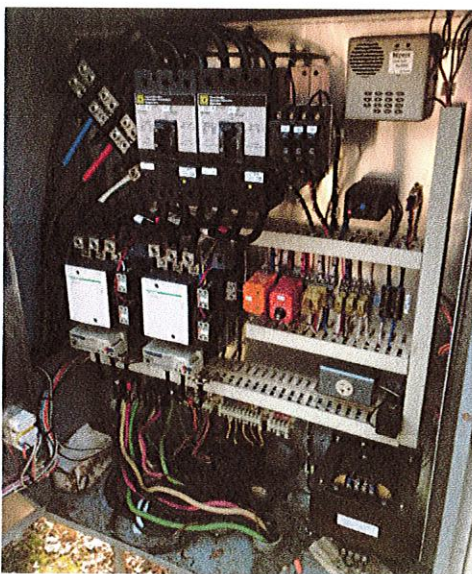
GLOBAL CONTROL SYSTEMS INC.

System Integration & Automation Solutions

3) Bohannon Woods PS: When we reach the PS, both pumps HOA switch were in "OFF" mode and the pump station was not in service. By looking at the condition of the panel, GCS Inc feels that it has reached the end-of-life cycle and needs to replace it with a new Pump control panel. We found out that Mission MIDRO 150 unit is installed but not none of the Pump I/O is connected. GCS Inc. also proposed to install a pressure transmitter to continually monitor the level on SCADA and SCADA can send an alarm to your cell phone once reached a HIGH or LOW level at the PS.



4) Calico loop PS: By looking at the condition of the panel, GCS Inc feels that it has reached the end-of-life cycle and needs to replace it with a new Pump control panel. GCS Inc. proposed to install new Mission MIDRO 150 and also proposed to install a pressure transmitter to continually monitor the level on SCADA and SCADA can send an alarm to your cell phone once reached a HIGH or LOW level at the PS.



Minority Female Business Enterprise

3297 Millwood Trail Smyrna, GA 30080 P: 678-908-8392 F: 770-432-9300 www.globalcontrolsystems.com

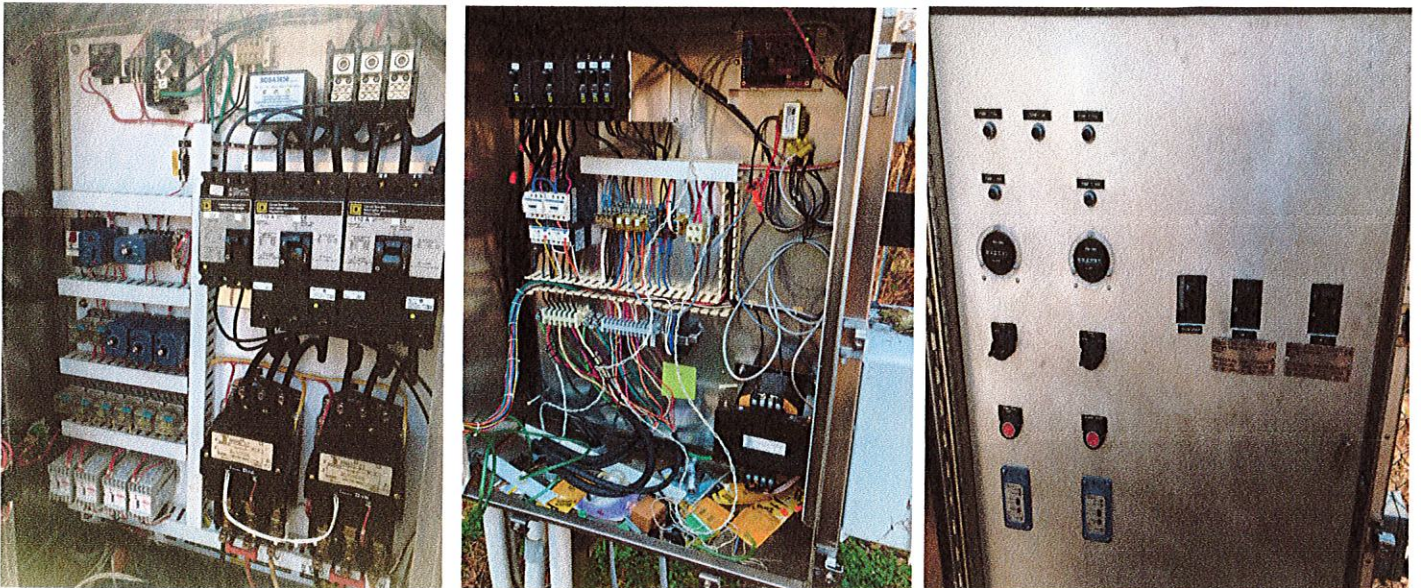
GLOBAL CONTROL SYSTEMS INC.

System Integration & Automation Solutions

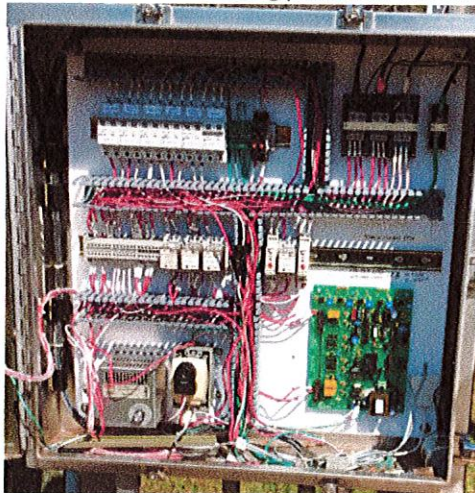
4) Griffin Street PS: By looking at the condition of the panel, GCS Inc. proposed to install new Mission MIDRO 150 and also proposed to install a pressure transmitter to continually monitor the level on SCADA and SCADA can send an alarm to your cell phone once reached a HIGH or LOW level at the PS.

5) Brasch Park PS: By looking at the condition of the panel, GCS Inc. proposed to install new Mission MIDRO 150 and also proposed to install a pressure transmitter to continually monitor the level on SCADA and SCADA can send an alarm to your cell phone once reached a HIGH or LOW level at the PS.

6) Ivy Glenk PS: By looking at the condition of the panel, GCS Inc. proposed to install new Mission MIDRO 150 and also proposed to install a pressure transmitter to continually monitor the level on SCADA and SCADA can send an alarm to your cell phone once reached a HIGH or LOW level at the PS.



7) Bexley Remote PRV Site: GCS Inc proposed to install Mission SCADA MIDRO850 unit control the valve and chemical pump from Tank PRV site. The existing panel is in excellent condition.



Minority Female Business Enterprise

3297 Millwood Trail Smyrna, GA 30080 P: 678-908-8392 F: 770-432-9300 www.globalcontrolsystems.com

Summary

Above findings show that only two pump control panels need to be replaced with the new one. The city of Grantville already purchased five (5) MISSION 150 units that can be used at the existing five PS right now once field modification made in the CP to send Pump RUN, FAIL, HI, LO alarm signal to MISSION. For the Tank PRV and Bexley site, City needs to purchase MISSION MIDRO 850 with Tank and well PKG software. Aerator Panel also needs to be field modified to replace existing PLC and HMI. GCS Inc also proposed to install pressure transducers at each of the PS well to monitor the PS level in a SCADA system.



GLOBAL CONTROL SYSTEMS INC.

System Integration & Automation Solutions

March 12, 2021

Mr. Al Grieshaber Jr.

City of Grantville

123 La Grange St.

Grantville, GA 30220

Via: agrieshaber@grantville.org

Reference:

- GCS Proposal Number 21GA007-Rev.1
- Water WWTP Various Upgrade
- PLC and SCADA Upgrade

Dear Al:

Global Control Systems, GCS Inc, is pleased to provide the following proposal for above reference project per the field visit and discussion on phone call.

The following items are included in the proposal:

Functional Scope:

- **Upgrade existing Aerator Control PLC hardware to new Automation Direct Productivity 3000 series PLC hardware to accomplish all automatic and manual control of the process.**
- **Upgrade existing XYCOM HMI to C-MORE 10" Color Touch Screen HMI**

PLC, SCADA Hardware upgrades (typical for one) include:

- Qty.1: Productivity Series 3000 PLC
- Qty.1: PLC Expansion Rack Cable
- Qty.1: Power Supply
- Qty.2: 16 Point Discrete Input Modules – 120 VAC power with Zip Link cable & Connector
- Qty.1: 16 Point Relay Output Module – AC Output with Zip Link cable & Connector
- Qty.1: 16 Point Analog Input Module with Zip Link cable & Connector
- Qty.1: C-More 10" Color Touch Screen HMI

Note:

- This scope does not include any new hardware's other than above.
- This scope includes PLC Programming service.
- This scope includes HMI Programming service.
- GCS Inc. will modify the existing PLC panel to install new hardware's.
- GCS Inc. will terminate the new PLC I/O wires to existing panel terminals.
- This includes on-site PLC Panel field start-up services.
- This includes on-site meeting with customer to coordinate hardware modifications necessary to accomplish the defined task. This scope will be required shutdown of the complete systems.
- This does not include on-site field customer training services.
- This scope does not include any spare parts.
- This scope does not include plant wide drawing submittals.
- This scope does not include installing or supplying MISSION SCADA unit.

Minority Female Business Enterprise

3297 Millwood Trail Smyrna, GA 30080 P: 678-908-8392 F: 770-432-9300 www.globalcontrolsystems.com

GLOBAL CONTROL SYSTEMS INC.

System Integration & Automation Solutions

GCS will assume responsibility only for the equipment and services enumerated herein in accordance with the existing drawings and hardware mention above. GCS will not provide equipment installation, existing system modifications, equipment demolition, mounting hardware, floor stands, wall brackets or instrument racks, sunshades, field wiring or termination, wiring conduits or wiring, field tubing and any spare parts unless otherwise explicitly stated within the body of this Scope of Supply.

PLC hardware delivery will be within three (3) to four (4) weeks after receipt of drawing approvals.

Total Base cost for the Aerator PLC panel and HMI Upgrade.....\$ 14,620.00

Existing List Stations SCADA Monitoring one each at:

- a) Bohannon Woods PS
- b) Calico Loop PS
- c) Griffin Street PS
- d) Brasch Park PS
- e) Ivy Glen PS

- Supply and Install Qty.1 Endress+Hauser Hydrostatic Level Transmitter with startup
- Install Qty.1 MISSION MIDRO 150 (Supplied by City of Grantville)
- Modify the existing pump control panel to monitor Pump RUN, Pump FAIL, HIGH FLOAT and LOW FLOAT signal on MISSION SCADA.

One each cost for the above scope.....\$ 5,400.00

Total cost for the above scope for all five lift stations.....\$ 27,000.00

Note:

- This scope includes to mount Mission panels on side of existing pump panel.
- This scope includes to install 0.75" rigid conduit from Hydrostatic level transmitter to pump panel.
- This scope includes to core wet well top to install Hydrostatic level transmitter.
- New conduit will be exposed on concrete and buried in dirt or gravel.
- This scope includes field startup, field wiring and termination to MISSION SCADA.

Qty.1: Bohannon Woods PS New Pump Control Panel 7.1/2 HP: includes, assembled with specified hardware, completely wired and tested, to be provided. This includes:

- Qty.1: **NEMA 4X, Single Door, 304 Stainless Steel, Wall mount**
w/back sub panel, Dead Front Swing out panel
- Qty.1: 230 VAC, 3 PH, 14 KAIC, 3 wire w/GND Surge Protective Device
- Qty.1: Lot Branch Circuit Breakers
- Qty.1: 230 VAC/ 120 VAC Transformer
- Qty.2: **NEMA Size: 1, Non-Reversing Starter, 7.1/2 HP, 27 AMP., 230 VAC, 3-Phase**
- Qty.1: Phase Monitor with Base
- Qty.1: Duplex Pump Alternator
- Qty.1: 120 VAC Single Phase, Surge Protective Device
- Qty.2: Elapsed Time Meter
- Qty.3: H-O-A 3-Pos. Selector Switch and Pump Alternator SS
- Qty.2: PUMP "RUNNING" Light
- Qty.2: PUMP "FAIL" Light
- Qty.4: "SEAL FAIL" AND "HIGH TEMP" Light

Minority Female Business Enterprise

3297 Millwood Trail Smyrna, GA 30080 P: 678-908-8392 F: 770-432-9300 www.globalcontrolsystems.com

GLOBAL CONTROL SYSTEMS INC.

System Integration & Automation Solutions

- Qty.1: MISSION RTU-UNIT 150 (To be furnished by City of Grantville)
- Qty.1 Lot: Moisture and Leak Detector Relays with Sockets
- (GCS Inc will use existing pump sensor)
- Qty.1 Lot Specified component like panel AC-power lightning/surge arrestor, control relays, circuit breaker, control power circuit, terminal blocks, fuses, wire, duct and legends

Total Base Cost for the above duplex pump control panel.....\$ 15,335.00

Note:

- Others will provide 230 power for this panel
- Above price **does not** include installation of panels/enclosure and termination of field wiring inside panels.
- Above price **does not** include any field instruments / devices / enclosures / control panels other than listed above.

Electrical contractor installation scope:

- Provide and install Aluminum Rack to replace the old wood rack.
- Demo old pump panel and mount new control panel and existing hardware on new rack.
- Reconnect existing power wires, floats and pump wires.
- Bypassing of the pump station during this work is not included. (Min. 8 Hrs.)

Total Base Cost for the above Electrical contractor scope.....\$ 4,370.00

Qty.1: Calico Loop PS New Pump Control Panel 30 HP: includes, assembled with specified hardware, completely wired and tested, to be provided. This includes:

- Qty.1: **NEMA 4X, Single Door, 304 Stainless Steel, Wall mount**
w/back sub panel, Dead Front Swing out panel
- Qty.1: 230 VAC, 3 PH, 14 KAIC, 3 wire w/GND Surge Protective Device
- Qty.1: Lot Branch Circuit Breakers
- Qty.1: 230 VAC/ 120 VAC Transformer
- Qty.2: **NEMA Size: 3, Non-Reversing Starter, 30 HP, 90 AMP., 230 VAC, 3-Phase**
- Qty.1: Phase Monitor with Base
- Qty.1: Duplex Pump Alternator
- Qty.1: 120 VAC Single Phase, Surge Protective Device
- Qty.2: Elapsed Time Meter
- Qty.3: H-O-A 3-Pos. Selector Switch and Pump Alternator SS
- Qty.2: PUMP "RUNNING" Light
- Qty.2: PUMP "FAIL" Light
- Qty.4: "SEAL FAIL" AND "HIGH TEMP" Light
- Qty.1: MISSION RTU-UNIT 150 (To be furnished by City of Grantville)
- Qty.1 Lot: Moisture and Leak Detector Relays with Sockets
- (GCS Inc will use existing pump sensor)
- Qty.1 Lot Specified component like panel AC-power lightning/surge arrestor, control relays, circuit breaker, control power circuit, terminal blocks, fuses, wire, duct and legends

Total Base Cost for the above duplex pump control panel.....\$ 17,110.00

Minority Female Business Enterprise

3297 Millwood Trail Smyrna, GA 30080 P: 678-908-8392 F: 770-432-9300 www.globalcontrolsystems.com

System Integration & Automation Solutions

Note:

- Others will provide 230 power for this panel
- Above price **does not** include installation of panels/enclosure and termination of field wiring inside panels.
- Above price **does not** include any field instruments / devices / enclosures / control panels other than listed above.

Electrical contractor installation scope:

- Provide and install Aluminum Rack to replace the old wood rack.
- Demo old pump panel and mount new control panel and existing hardware on new rack.
- Reconnect existing power wires, floats and pump wires.
- Bypassing of the pump station during this work is not included. (Min. 8 Hrs.)

Total Base Cost for the above Electrical contractor scope.....\$ 4,370.00

City Hall PRV Valve Control:

Qty.1 Rosemount Differential Pressure Transmitter with 3 Valve Manifold, Local display and

Surge suppressor with.....\$ 2,500.00

Note:

- This scope **does not** include installation in the field.
- This scope includes field startup and connection to MISSION SCADA.
- City will be required to purchase Qty.2 MISSION MIDRO 850 with Tank and Well package software
- Qty.1 MISSION at City Hall and other one at Bexley Remote site.

By looking at the above scope, the City of Grantville have purchased **Qty.5 MISSION MIDRO 150** unit. These units can be used at existing five lift stations. The City still needs to purchase **Qty 2 MISSION MIDRO 850** for Tank PRV and Bexley site and **Qty. 1 MISSION MIDRO 150** for Aerator panels site.

Any applicable **sales taxes are NOT** included in our cost.

Warranty:

Warranty will be provided for One year from delivery of material.

Terms for Payment

- 30% Approved PLC Panels system Hardware Equipment Submittal. Net 30 Days
- 50% After installation of system. Net 30 Days
- 20% After Field Start-up. Net 30 Days

.....

Terms and Conditions

Prices quoted herein are for the equipment and services listed and do not include any external electrical wiring or termination, equipment installation, plumbing or mechanical interconnection.

Prices are in US funds, all applicable taxes extra. The above prices will be held for **thirty (30) days** provided equipment manufacturer's price does not change. Any equipment price change will be forwarded to the customer. If we are not at the agreement within specified time frame, terms and agreement will be negotiated at later date.



GLOBAL CONTROL SYSTEMS INC.

System Integration & Automation Solutions

Payment terms are:

Pro-rated payment shall become due as each partial shipment is made. If shipment is delayed for any reason that is beyond the control of GCS, prices shall be increased 1.5% for each full month or fraction thereof that shipment is delayed beyond reasonable time frame. Further, if equipment is ready for shipment, and purchaser delays shipment, date of notice of readiness of shipment shall be deemed to be date of shipment for payment purposes.

We appreciate the opportunity to furnish you with this proposal and look forward to working with you on this project. Should you have any questions, please feel free to give us a call.

Sincerely,
Global Control Systems Inc.



Rakesh Patel | Project Manager



GLOBAL CONTROL SYSTEMS INC.
System Integration & Automation Solutions

3297 Millwood Trail
Smyrna, Georgia 30080
Office: 678-908-8392

Minority Female Business Enterprise

3297 Millwood Trail Smyrna, GA 30080 P: 678-908-8392 F: 770-432-9300 www.globalcontrolsystems.com

Southern Power Systems Services, Inc.
Engineering, Installation, Technical and repair services for
Engine Generator Sets and Related Systems
Phone (770) 304-0380 Fax (770) 304-0105

December 11, 2020

City of Grantville
Public Works and Utilities
P (770) 583-2289 x 2009
Email: jhenry@grantvillega.org

Subject: Brasch Park and Griffin St.
50KW Propane Generator Unit with 200amp ATS

Dear Mrs. Henry,

Thank you for the opportunity to offer the following quote:

**50KW Cummins Onan Connect Propane Generator Model C50N6 120/240 3 Phase with 200amp
Transfer Switch.....\$19,797.00 per unit**

Concrete Pad.....\$1,500.00 per unit

Removal and Installation.....\$9,000.00 per unit

Project Cost for Brasch Park \$30,297.00

Project Cost for Griffin Street.....\$30,297.00

The cost quoted is only for items stated in this proposal.

Please let me know if you need additional information. Thank you again for the opportunity.

Regards,

Melissa Stuckey

Melissa Stuckey

Director of Marketing

Southern Power Systems Services, Inc.

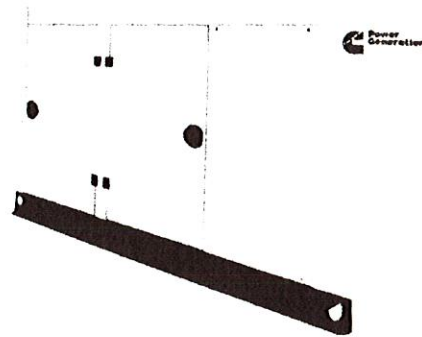
A Service Disabled Veteran Owned Business

www.spsservices.com

(770) 304-0380



Quiet Connect™ Series RS50



Features and benefits

Robust product design and testing - The generator is designed to operate under extreme environmental conditions including cold weather starts at as low as -40 °F when equipped with the necessary accessories. The generator is tested and certified per the latest EPA, UL and IBC Seismic standards and is capable of meeting NFPA110 requirements when equipped with the necessary accessories and properly installed.

Flexible exercise mode - The innovative, flexible exercise mode enables the generator to exercise at a time, frequency and duration that suits the customer's preference - as little as 2 minutes every 6 months - reducing unnecessary fuel consumption, emissions and noise.

Advanced enclosure design - The aesthetically appealing enclosure incorporates special designs that deliver the quietest generator of its kind. Aluminum material plus durable powder coat paint provides the best anti-corrosion performance. The generator set enclosure has been evaluated to withstand 180 MPH wind loads in accordance with ASCE7-10. The design has hinged doors to provide easy access for service and maintenance.

Self-diagnostics and easy service - The generator is equipped with Cummins PowerCommand® electronic control to provide industry-leading self-diagnostic capabilities. In addition, critical components of the generator are designed to ensure service and preventive maintenance can be completed in a short period of time.

Weight, size and sound level

Weight: 2403 lbs. (1090 kg)

Size: Length 118.7 in (3016 mm), width 40.0 in (1016 mm), height 58.3 in (1480 mm)

Sound: 69.3 dB(A) at 23 ft. (7 m) with sound level 2 enclosure

Series	Model	Phase	Voltage (V)	Frequency (Hz)	Rated amps ¹ (NG/LPV fuel)	Circuit breaker (Amps)
RS50	C50N6	1	120/240	60	208/208	250
		3	120/208	60	173/173	225
		3	120/240	60	150/150	200
		3	277/480	60	75.2/75.2	100

¹ Derating guidelines: Engine power available up to 152 m (500 ft.) at ambient temperatures up to 25 °C (77 °F). Above these elevations derate at 4% per 305m (1000 ft.) and 2% per 10 °C above 25 °C (77 °F).

Our energy working for you.™

©2018 Cummins Inc. | NAS-6168-EN (06/18)

power.cummins.com

Product features

Engine

- Natural gas/propane 1800 rpm engine
- Engine air cleaner – normal duty
- Electronic governor, isochronous
- Engine starter, 12 VDC motor
- Shutdown – low oil pressure
- Extension – oil drain
- Engine oil – included

Fuel system

- Single fuel – natural gas or propane vapor, field selectable

Alternator

- 60 Hz, 1 phase, 4 lead, or 3 phase, 12 lead, 120 °C temperature rise at 40 °C ambient
- Exciter/voltage regulator – torque match

Control

- PowerCommand 1.1
- Display language – English
- Control mounting, left facing

Electrical

- Single circuit breaker, UL certified, right-side mounted
- Battery charging alternator, normal duty
- Battery charger – 6 Amp, regulated

Cooling

- Generator set cooling capability – 50 °C
- Shutdown – low coolant level
- Engine coolant – 50/50 mixture
- Extension – coolant drain

Enclosure

- Aluminum enclosure Sound Level 1 with muffler installed, sandstone color
- Wind rating – 180 MPH

Code compliance

- UL 2200
- EPA emissions, stationary emergency, 40CFR60
- IBC Seismic
- NFPA110 capable

Generator set application

- Coolant heater
- Crank case vent heater
- Battery rack
- Flexible fuel line
- Literature (English) – operator's manual, installation manual

Warranty

- Base warranty – 2 year standby
- Extended warranties available

Packaging

- Shipping pallet

Generator set performance

Governor regulation class: ISO 8528 Part 1 Class G3

Voltage regulation, no load to full load: $\pm 1.0\%$

Random voltage variation: $\pm 1.0\%$

Frequency regulation: Isochronous

Random frequency variation: $\pm 0.25\%$ @ 60 Hz

Radio frequency emissions compliance: FCC code

Title 47 part 15 Class B

Engine

Design: Naturally aspirated

Bore: 102.1 mm (4.02 in)

Stroke: 119.9 mm (4.72 in)

Displacement: 5.9 liters (359 in³)

Cylinder block: Cast iron, in-line 6 cylinder

Battery capacity: 850 amps at ambient temperature of 0 °F to 32 °F (-18 °C to 0 °C)

Battery charging alternator: 52 amps

Starting voltage: 12 volt, negative ground

Lube oil filter type(s): Spin-on with relief valve

Standard cooling system: 50° C (122° F) ambient cooling system

Rated speed: 1800 rpm

Fuel supply pressure

Minimum fuel supply pressure: 1.5 kPa (6.0 in H₂O)

Maximum fuel supply pressure: 3.5 kPa (14.0 in H₂O)

Control system

The PowerCommand® electronic control is standard equipment and provides total generator set system integration including automatic remote starting/stopping, precise frequency and voltage regulation, alarm and status message display, output metering, auto-shutdown at fault detection and NFPA 110 Level 1 compliance.

Sound attenuated enclosure

The aesthetically appealing enclosure incorporates special designs that deliver the quietest generator of its kind. Aluminum material plus durable powder coat paint provides the best anti-corrosion performance. The generator set enclosure has been evaluated to withstand 180 MPH wind loads in accordance with ASCE7-10. The design has hinged doors to provide easy access for service and maintenance.

Our energy working for you.™

©2018 Cummins Inc. | NAS-6168-EN (06/18)

power.cummins.com

Average fuel consumption

Fuel consumption – natural gas

Load:	1/4	1/2	3/4	Full
Ft ³ /hr:	341.3	481.6	624.6	806.3
M ³ /hr:	9.66	13.6	17.7	22.8

Conversion factor:

8.58 ft³ = 1 lbs

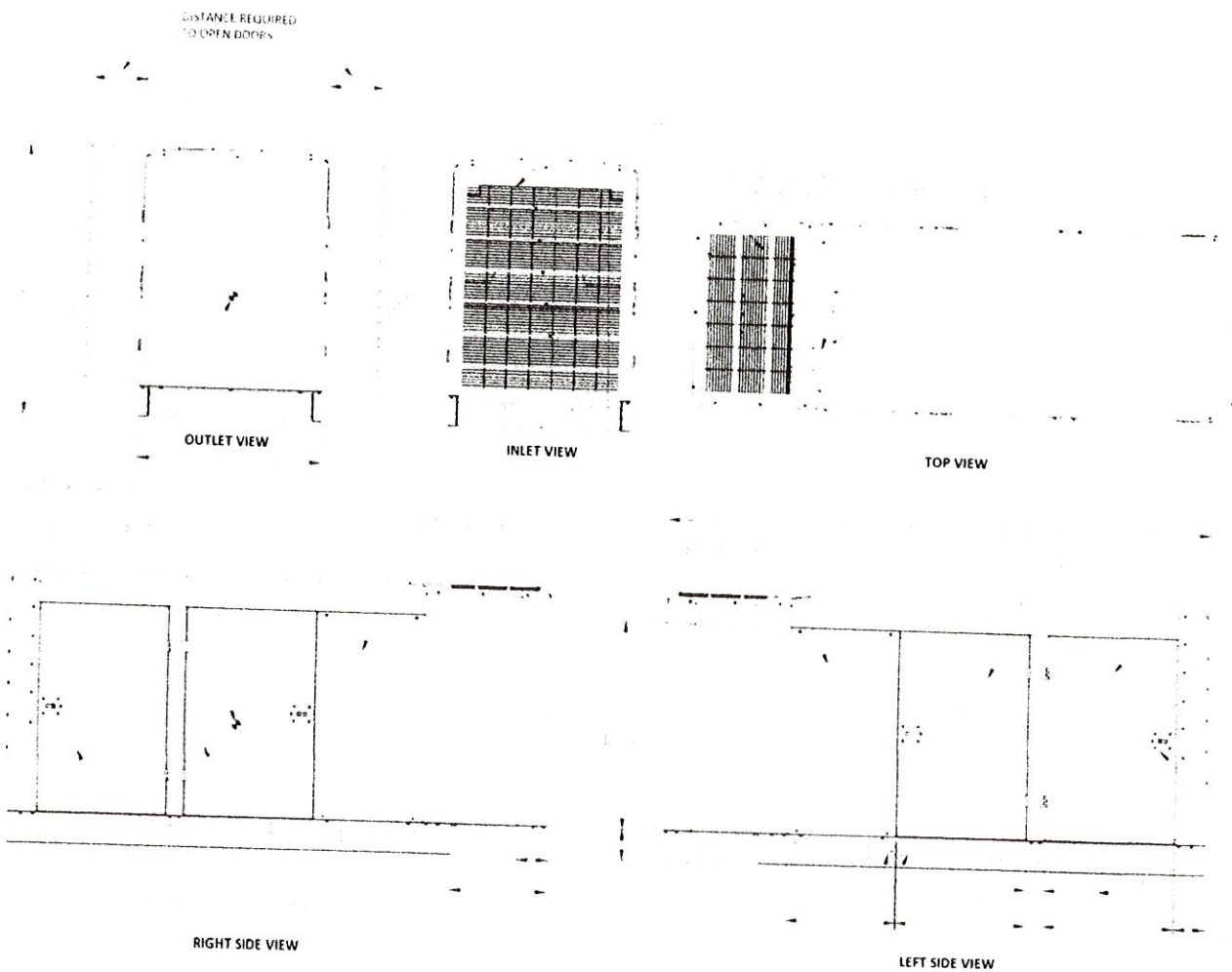
0.535m³ = 1 kg

36.39 ft³ = 1 gal

Fuel consumption – LP vapor

Load:	1/4	1/2	3/4	Full
Ft ³ /hr:	144.8	204.7	254.3	321.6
M ³ /hr:	4.10	5.80	7.20	9.11
Gal/hr:	3.98	5.63	6.99	8.84

Basic dimensions



Note: This outline drawing is provided for general reference only and is not intended for use in design or installation.
For more information, see Operators and Installation manuals or contact your distributor or dealer for assistance.

Our energy working for you.™

Accessories

- HMI211RS in-home display, including pre-configured 12" harness
- HMI211 remote display, including pre-configured 12" harness
- HMI220 remote display
- Auxiliary output relays (2)
- Auxiliary configurable signal inputs (8) and relay outputs (8)
- Annunciator – RS485
- Internet monitoring device – PowerCommand 500
- Battery chargers – stand-alone, 12V
- Enclosure Sound Level 1 to Sound Level 2 upgrade kit
- Enclosure paint touch up kit
- Base barrier – elevated generator set
- Alternator heater
- Maintenance and service kit
- Extreme cold weather kit for operating temperatures below 0 °F (-17 °C)



WARNING:

Standby rating based on: Applicable for supplying emergency power for the duration of normal power interruption. No sustained overload capability is available for this rating. (Equivalent to fuel stop power in accordance with ISO3046, AS2789, DIN6271 and BS5514) nominally rated. See T030.

WARNING:

Back feed to a utility system can cause electrocution and/or property damage. Do not connect to any building electrical except through an approved device or after building main breaker is open.

Transfer switch (sold separately)

- Automatic Transfer Switches available in various amperages.
- Service Entrance models are also available, which helps reduce the installation cost.
- All models UL listed to UL 1008 standard.
- Available for both Indoor and Outdoor applications.
- Compatibility with Cummins generator set helps reduce the installation time for the complete application.

Warranty policy

The Cummins RS and RX liquid cooled generator set models come with a 2 year base warranty when used in EPA-Stationary Emergency application. The RA series Automatic Transfer Switches come with a 2 year base warranty. Extended warranty options are available. Please contact Cummins dealers/distributors for details.

After sale support

Largest distributor/dealer support network
Cummins Power Generation generator sets are supported by the largest and best trained worldwide certified distributor/dealer network in the industry. The network of knowledgeable and highly trained dealers will help you select the right generator for your application and advise you on associated accessories for your generator. The dealer network can also help answer any questions you may have regarding operation and maintenance requirements of the generators. This same network offers a complete selection of commonly used generator set maintenance parts, manuals and specification sheets.

Manuals: Operation and installation manuals ship with the generator set. To obtain additional copies or other manuals for this model, see your distributor/dealer. To easily locate the nearest certified distributor/dealer for Cummins generators in your area, or for more information, contact us at 1-800-344-0039 or visit power.cummins.com.

Contact your distributor/dealer for more information.

North America
1400 73rd Avenue N.E.
Minneapolis, MN 55432
USA

Phone 763 574 5000
Fax 763 574 5298

"Our energy working for you."

©2018 Cummins Inc. All rights reserved.
Cummins is a registered trademark of Cummins Inc.
"Our energy working for you." is a trademark of Cummins Inc. Other company, product, or service names may be trademarks or service marks of others. Specifications are subject to change without notice.
NAS-6168-EN (06/18)



power.cummins.com

Southern Power Systems Services, Inc.
Engineering, Installation, Technical and repair services for
Engine Generator Sets and Related Systems
Phone (770) 304-0380 Fax (770) 304-0105

December 11, 2020

City of Grantville
Public Works and Utilities
P (770) 583-2289 x 2009
Email: jhenry@grantvillega.org

Subject: Ivy Glen, Bohannon Woods and Calico
50KW Propane Generator Unit with 200amp ATS

Dear Mrs. Henry,

Thank you for the opportunity to offer the following quote:

**50KW Cummins Onan Connect Propane Generator Model C50N6 120/240 3 Phase with 200amp
Transfer Switch.....\$19,797.00 per unit**

Concrete Pad.....\$1,500.00 per unit

Installation of unit.....\$7,500.00 per unit

Project Cost for Ivy Glen..... \$28,797.00

Project Cost for Bohannon Woods.....\$28,797.00

Project Cost for Calico.....\$28,797.00

The cost quoted is only for items stated in this proposal.

Please let me know if you need additional information. Thank you again for the opportunity.

Regards,

Melissa Stuckey

Melissa Stuckey

Director of Marketing

Southern Power Systems Services, Inc.

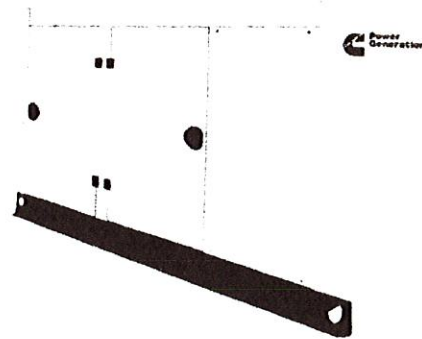
A Service Disabled Veteran Owned Business

www.spsservices.com

(770) 304-0380



Quiet Connect™ Series RS50



Features and benefits

Robust product design and testing - The generator is designed to operate under extreme environmental conditions including cold weather starts at as low as -40 °F when equipped with the necessary accessories. The generator is tested and certified per the latest EPA, UL and IBC Seismic standards and is capable of meeting NFPA110 requirements when equipped with the necessary accessories and properly installed.

Flexible exercise mode - The innovative, flexible exercise mode enables the generator to exercise at a time, frequency and duration that suits the customer's preference - as little as 2 minutes every 6 months - reducing unnecessary fuel consumption, emissions and noise.

Advanced enclosure design - The aesthetically appealing enclosure incorporates special designs that deliver the quietest generator of its kind. Aluminum material plus durable powder coat paint provides the best anti-corrosion performance. The generator set enclosure has been evaluated to withstand 180 MPH wind loads in accordance with ASCE7-10. The design has hinged doors to provide easy access for service and maintenance.

Self-diagnostics and easy service - The generator is equipped with Cummins PowerCommand® electronic control to provide industry-leading self-diagnostic capabilities. In addition, critical components of the generator are designed to ensure service and preventive maintenance can be completed in a short period of time.

Weight, size and sound level

Weight: 2403 lbs. (1090 kg)

Size: Length 118.7 in (3016 mm), width 40.0 in (1016 mm), height 58.3 in (1480 mm)

Sound: 69.3 dB(A) at 23 ft. (7 m) with sound level 2 enclosure

Series	Model	Phase	Voltage (V)	Frequency (Hz)	Rated amps ¹ (NG/LPV fuel)	Circuit breaker (Amps)
RS50	C50N6	1	120/240	60	208/208	250
		3	120/208	60	173/173	225
		3	120/240	60	150/150	200
		3	277/480	60	75.2/75.2	100

¹ Derating guidelines: Engine power available up to 152 m (500 ft.) at ambient temperatures up to 25 °C (77 °F). Above these elevations derate at 4% per 305m (1000 ft.) and 2% per 10 °C above 25 °C (77 °F).

Our energy working for you.™

©2018 Cummins Inc. | NAS-6168-EN (06/18)

power.cummins.com

Product features

Engine

- Natural gas/propane 1800 rpm engine
- Engine air cleaner – normal duty
- Electronic governor, isochronous
- Engine starter, 12 VDC motor
- Shutdown – low oil pressure
- Extension – oil drain
- Engine oil – included

Fuel system

- Single fuel – natural gas or propane vapor, field selectable

Alternator

- 60 Hz, 1 phase, 4 lead, or 3 phase, 12 lead, 120 °C temperature rise at 40 °C ambient
- Exciter/voltage regulator – torque match

Control

- PowerCommand 1.1
- Display language – English
- Control mounting, left facing

Electrical

- Single circuit breaker, UL certified, right-side mounted
- Battery charging alternator, normal duty
- Battery charger – 6 Amp, regulated

Cooling

- Generator set cooling capability – 50 °C
- Shutdown – low coolant level
- Engine coolant – 50/50 mixture
- Extension – coolant drain

Enclosure

- Aluminum enclosure Sound Level 1 with muffler installed, sandstone color
- Wind rating – 180 MPH

Code compliance

- UL 2200
- EPA emissions, stationary emergency, 40CFR60
- IBC Seismic
- NFPA110 capable

Generator set application

- Coolant heater
- Crank case vent heater
- Battery rack
- Flexible fuel line
- Literature (English) – operator's manual, installation manual

Warranty

- Base warranty – 2 year standby
- Extended warranties available

Packaging

- Shipping pallet

Generator set performance

Governor regulation class: ISO 8528 Part 1 Class G3

Voltage regulation, no load to full load: ±1.0%

Random voltage variation: ±1.0%

Frequency regulation: Isochronous

Random frequency variation: ± 0.25% @ 60 Hz

Radio frequency emissions compliance: FCC code

Title 47 part 15 Class B

Engine

Design: Naturally aspirated

Bore: 102.1 mm (4.02 in)

Stroke: 119.9 mm (4.72 in)

Displacement: 5.9 liters (359 in³)

Cylinder block: Cast iron, in-line 6 cylinder

Battery capacity: 850 amps at ambient temperature of 0 °F to 32 °F (-18 °C to 0 °C)

Battery charging alternator: 52 amps

Starting voltage: 12 volt, negative ground

Lube oil filter type(s): Spin-on with relief valve

Standard cooling system: 50° C (122° F) ambient cooling system

Rated speed: 1800 rpm

Fuel supply pressure

Minimum fuel supply pressure: 1.5 kPa (6.0 in H₂O)

Maximum fuel supply pressure: 3.5 kPa (14.0 in H₂O)

Control system

The PowerCommand® electronic control is standard equipment and provides total generator set system integration including automatic remote starting/stopping, precise frequency and voltage regulation, alarm and status message display, output metering, auto-shutdown at fault detection and NFPA 110 Level 1 compliance.

Sound attenuated enclosure

The aesthetically appealing enclosure incorporates special designs that deliver the quietest generator of its kind. Aluminum material plus durable powder coat paint provides the best anti-corrosion performance. The generator set enclosure has been evaluated to withstand 180 MPH wind loads in accordance with ASCE7-10. The design has hinged doors to provide easy access for service and maintenance.

Average fuel consumption

Fuel consumption – natural gas

Load:	1/4	1/2	3/4	Full
Ft ³ /hr:	341.3	481.6	624.6	806.3
M ³ /hr:	9.66	13.6	17.7	22.8

Conversion factor:

8.58 ft³ = 1 lbs

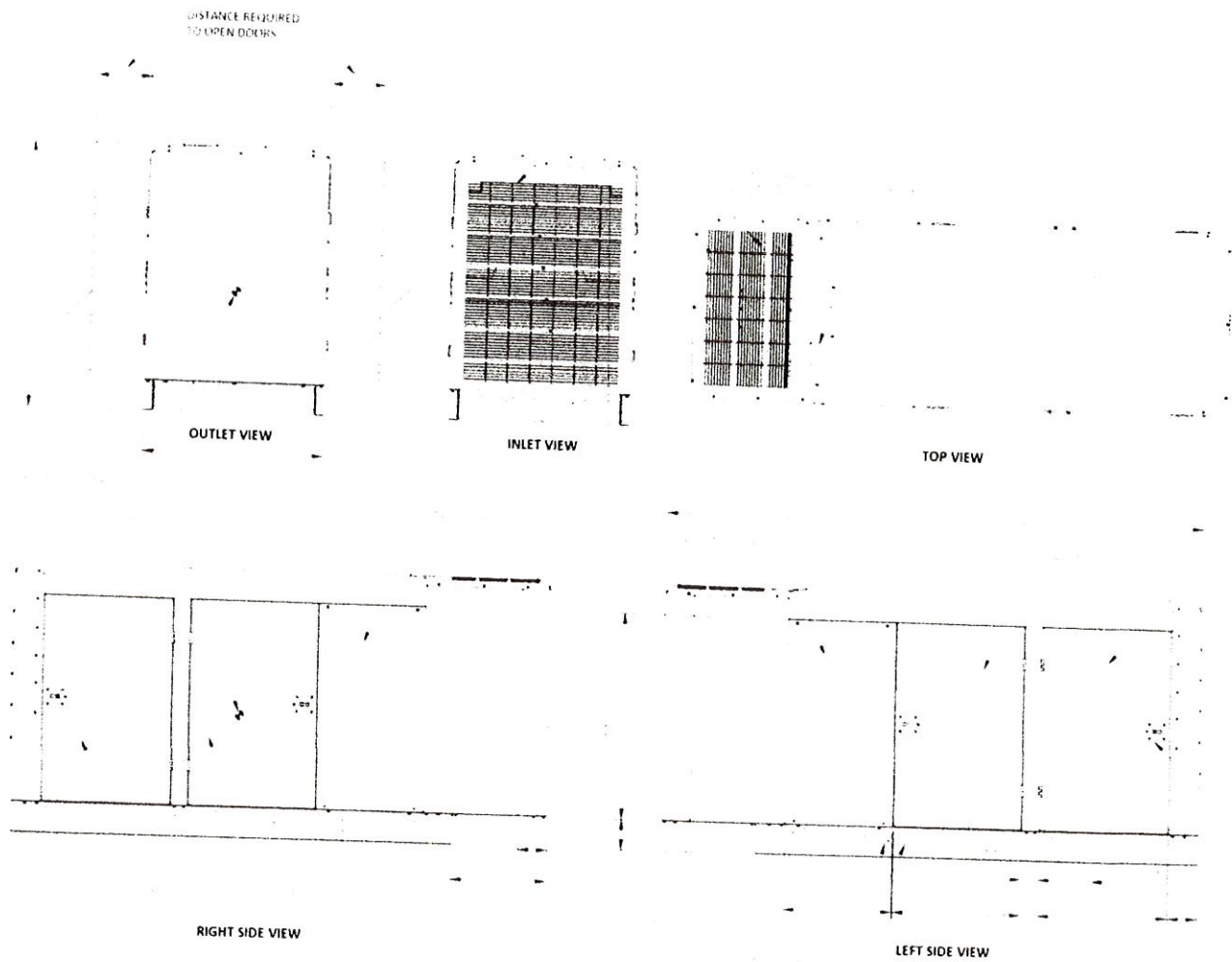
0.535m³ = 1 kg

36.39 ft³ = 1 gal

Fuel consumption – LP vapor

Load:	1/4	1/2	3/4	Full
Ft ³ /hr:	144.8	204.7	254.3	321.6
M ³ /hr:	4.10	5.80	7.20	9.11
Gal/hr:	3.98	5.63	6.99	8.84

Basic dimensions



Note: This outline drawing is provided for general reference only and is not intended for use in design or installation.
For more information, see Operators and Installation manuals or contact your distributor or dealer for assistance.

Our energy working for you.™

Accessories

- HMI211RS in-home display, including pre-configured 12" harness
- HMI211 remote display, including pre-configured 12" harness
- HMI220 remote display
- Auxiliary output relays (2)
- Auxiliary configurable signal inputs (8) and relay outputs (8)
- Annunciator – RS485
- Internet monitoring device – PowerCommand 500
- Battery chargers – stand-alone, 12V
- Enclosure Sound Level 1 to Sound Level 2 upgrade kit
- Enclosure paint touch up kit
- Base barrier – elevated generator set
- Alternator heater
- Maintenance and service kit
- Extreme cold weather kit for operating temperatures below 0 °F (-17 °C)



WARNING:

Standby rating based on: Applicable for supplying emergency power for the duration of normal power interruption. No sustained overload capability is available for this rating. (Equivalent to fuel stop power in accordance with ISO3046, AS2789, DIN6271 and BS5514) nominally rated. See T030.

WARNING:

Back feed to a utility system can cause electrocution and/or property damage. Do not connect to any building electrical except through an approved device or after building main breaker is open.

Transfer switch (sold separately)

- Automatic Transfer Switches available in various amperages.
- Service Entrance models are also available, which helps reduce the installation cost.
- All models UL listed to UL 1008 standard.
- Available for both Indoor and Outdoor applications.
- Compatibility with Cummins generator set helps reduce the installation time for the complete application.

Warranty policy

The Cummins RS and RX liquid cooled generator set models come with a 2 year base warranty when used in EPA-Stationary Emergency application. The RA series Automatic Transfer Switches come with a 2 year base warranty. Extended warranty options are available. Please contact Cummins dealers/distributors for details.

After sale support

Largest distributor/dealer support network
Cummins Power Generation generator sets are supported by the largest and best trained worldwide certified distributor/dealer network in the industry. The network of knowledgeable and highly trained dealers will help you select the right generator for your application and advise you on associated accessories for your generator. The dealer network can also help answer any questions you may have regarding operation and maintenance requirements of the generators. This same network offers a complete selection of commonly used generator set maintenance parts, manuals and specification sheets.

Manuals: Operation and installation manuals ship with the generator set. To obtain additional copies or other manuals for this model, see your distributor/dealer. To easily locate the nearest certified distributor/dealer for Cummins generators in your area, or for more information, contact us at 1-800-344-0039 or visit power.cummins.com.

Contact your distributor/dealer for more information.

North America
1400 73rd Avenue N.E.
Minneapolis, MN 55432
USA

Phone 763 574 5000
Fax 763 574 5298

"Our energy working for you."

©2018 Cummins Inc. All rights reserved.

Cummins is a registered trademark of Cummins Inc.

"Our energy working for you." is a trademark of Cummins Inc. Other company, product, or service names may be trademarks or service marks of others. Specifications are subject to change without notice.

NAS-6168-EN (06/18)



power.cummins.com

**Grantville Planning Commission
Meeting Minutes**

Date: December 3, 2020
Time: 6:00 p.m.
Location: Grantville City Hall, 123 LaGrange Street Grantville, Georgia 30220

Mr. Raptis called the Planning Commission meeting to order at 6:05 p.m.

Attendance

Tyree Raptis, Chairman
Joe Ward, Vice Chairman
Danny Clay
Brennan Jones, Zoning Administrator

Public Attendance

Jim Sells

Review & Approval of Minutes

Adoption of Planning Commission Meeting Minutes from February 6, 2020

Planning Commission meeting minutes for the meeting held on February 6, 2020 were distributed to the members for review and adoption. After review of the minutes, a motion was made by Mr. Clay to adopt the February 6, 2020 Planning Commission Meeting Minutes. The motion was seconded by Mr. Ward. After discussion, Mr. Raptis called for a vote and the motion passed unanimously.

Report of Committees

None

Unfinished Business

None

Hearing of Cases

None

New Business

Comprehensive Plan Future Land Use Character Area Map Amendment (Parcel ID G08 2247 001)
Brennan Jones presented a request to amend the Comprehensive Plan Future Land Use Character Area Map for parcel G08 2247 001 to show the future land use in an industrial. The Comprehensive Plan Future Land Use Character Area Map and a boundary survey of the subject parcel were given to the planning commission members for reference. The planning commission members discussed the proposal and expressed concerns about traffic issues and other impacts to existing residential developments in the Lowery Road and Jenny Road areas if the subject property were to rezone to an industrial use. Following discussion, Mr. Clay made a motion to recommend that the City Council deny the request to amend the Comprehensive Plan Future Land Use

Character Area Map to show a future land use of Industrial and to keep the current future land use as Developing Residential as indicated on the Comprehensive Plan Future Land Use Character Area Map. The motion was seconded by Mr. Ward. Following discussion, Mr. Raptis called for a vote and the motion passed unanimously.

Adjournment

Mr. Clay made a motion to adjourn the meeting. Mr. Ward seconded the motion. Mr. Raptis adjourned the Planning Commission Meeting at 6:43 p.m.

Brent Holdings, LLC
270 North Jeff Davis Drive
Fayetteville, GA 30214

October 28, 2020

Mr. Al Grieshaber
City Manager
City of Grantville
123 Lagrange Street
Grantville, Georgia 30220

****Via Email****

Re: Request for Consideration of Update to the City's Comprehensive Plan
Request for Consideration of Update of the City's Future Land Use Map

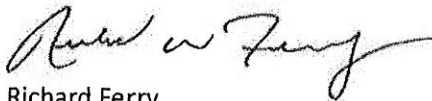
Dear Mr. Grieshaber:

Thank you for meeting with me this morning. We are very excited about working with the City. This letter is written in accordance with our discussion of the rezoning process in the City of Grantville.

As discussed, Brent Holdings, LLC has a contract with Jeffrey Mansour to purchase the +/- 125 acres on Lowery Road. The property is currently zoned R-20 for single family residential use. We believe that the best use of the property is for warehouse and distribution. To that end, we are requesting that the City consider updating the Comprehensive Plan so that this tract is shown as GI (General Industrial) and Future Land Use Map is amended accordingly.

I have attached a survey of the property. Please feel free to give me a call if you have any questions or comments.

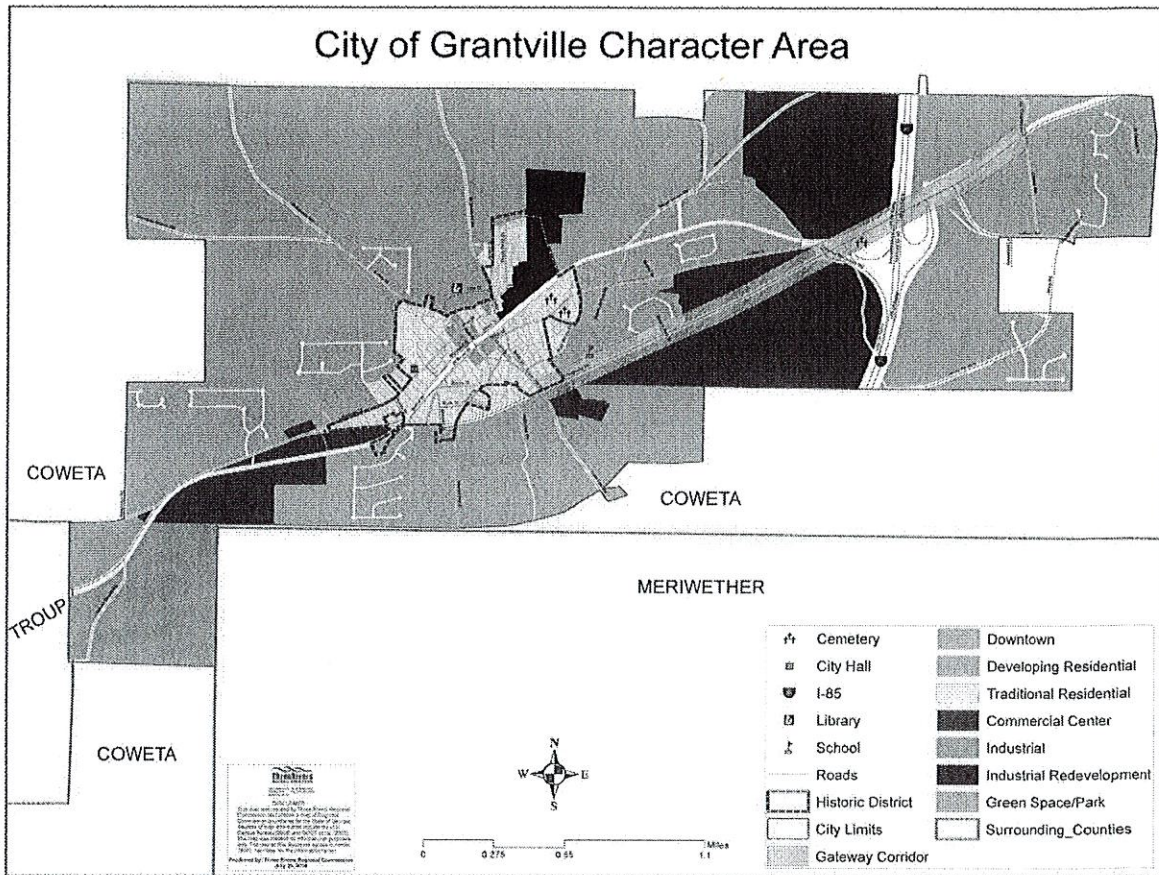
Thank you,



Richard Ferry
Brent Holdings, LLC
Project Manager

CC: Mr. Brennan Jones: via email

MAP 2 - CHARACTER AREA MAP





TO: Al Grieshaber, Jr., City Manager
City of Grantville

FROM: Edward E. Easterlin 
Sr. Vice President & CFO

DATE: March 22, 2021

SUBJECT: MEAG Power's 2020 Year-end Settlement

The 2020 Year-End Settlement was approved by the MEAG Power Board of Directors on March 18, 2021. In summary, net billings to Participants and other adjustments exceeded costs by \$27,469,361.

The attached election form identifies your city's refund amount as well as the investment options available for your City/Utility Commission's year-end settlement refund. Transfers to the Municipal Competitive Trust will be completed on a weekly basis as the approved election forms are received. Credits to monthly billings, if applicable, will begin the first month following the receipt of the election form.

We have an evergreen election on file for your year-end settlement refunds and have enclosed a copy for your review. To change the evergreen election for your year-end settlement, please complete and return the new election form as soon as possible, but no later than April 30, 2021.

Please feel free contact Cindy Clarke at 770-563-0456, your assigned Regional Manager or me at 678-202-3095 with any questions or comments.

Attachments

c: Robi Higgins, City Clerk
Doug Jewell, Mayor
Stuart Jones, Regional Manager

City of Grantville

MEAG POWER PROJECTS 2020 YEAR-END SETTLEMENT ELECTION FORM

The 2020 year-end settlement refund from MEAG Power applicable to your City/Utility Commission is:

Year-end Settlement Refund	\$26,288
-----------------------------------	-----------------

Please complete the following form with respect to the distribution of the above refunds. This election form is to be completed by the City's designated officer(s) authorized to direct the utilization of funds in the Municipal Competitive Trust.

We hereby direct that the following amount of funds available from the 2020 Year-end Settlement from MEAG Power be distributed as follows:

A. DEPOSIT TO THE MUNICIPAL COMPETITIVE TRUST

1. Flexible Operating Account—Short Term Portfolio	100 %	\$ 26,288
2. Flexible Operating Account—Intermediate Term Portfolio	_____ %	\$ _____
3. Flexible Operating Account, Intermediate Extended Maturity Portfolio*	_____ %	\$ _____
4. New Generation and Capacity Funding Account—Short Term Portfolio	_____ %	\$ _____
5. New Generation and Capacity Funding Account—Intermediate Term Portfolio	_____ %	\$ _____
6. New Generation and Capacity Funding Account –Intermediate Extended Maturity Portfolio*	_____ %	\$ _____

Subtotal of Dollars into Municipal Competitive Trust \$ 26,288.00

B. CREDIT TO MEAG POWER MONTHLY BILL:

Credit \$ _____ dollars evenly over _____ number of month(s)
Subtotal of Dollars to be Credited to Monthly Bill \$ _____

TOTAL YES REFUND

\$26,288



If you would like the selection(s) you made above to be permanent, until you notify us in writing otherwise, please check this box. This permanent selection will apply only to your MEAG Core Projects year-end settlement over-recovery.

* By authorizing the transfer into the new Intermediate Extended Maturity Portfolio, the undersigned acknowledges the following potential liquidity restrictions:

Under normal circumstances there will be no restrictions on investment purchases into or sales of shares from the Intermediate Extended Maturity Portfolio. On the occurrence of an event that has a material impact on liquidity or operations of the Intermediate Extended Maturity Portfolio, as determined by MEAG Power in its role providing direction to the Municipal Competitive Trust Trustee, MEAG Staff may limit purchases into or sales from the Intermediate Extended Portfolio for a period not to exceed 120 days. Restrictions on investments or sales beyond 120 days would require authorization from the MEAG Board. Such restrictions shall be immediately disclosed to all beneficiaries investing in the Intermediate Extended Maturity Portfolio of the Municipal Competitive Trust as well as the Trustee of the Municipal Competitive Trust (US Bank or its successor).

City of Grantville

MEAG POWER PROJECTS 2020 YEAR-END SETTLEMENT ELECTION FORM

For the election form to be complete, both of the signatures listed below are required.

By:

_____ Date: _____

The Honorable Doug Jewell
Mayor of Grantville

By:

_____ Date: _____

Jim Sells
Utility Committee Chairperson

To be included on your next bill, the form must be returned no later than April 30, 2021 to:

MEAG Power
c/o Cindy Carter
1470 Riveredge Parkway NW
Atlanta, GA 30328
ccarter@meagpower.org
Phone: 770-563-0526

AQUA DYNAMICS, INC.
8917 Martini Dr.
Jonesboro, GA 30236
(404) 992-5156
aquadynamics@comcast.net

PROPOSAL

March 18, 2021

Al Grieshaber Jr.
City Manager
City of Grantville
123 LaGrange Street
Grantville, GA 30220

Project: Pavilions at Post Street Park and Griffin Street Park, Granville, GA

We are pleased to provide you with this proposal for the turnkey construction for three pavilions two at Post Street Park and one at Griffin Street Park.

Materials and Labor for the following scopes of work:

Construction of three 20' x 20' open gable Pavilions:

- 20' x 20' reinforced concrete slab with footings
- Six - CMU block columns 16"x16" – Painted Color - TBD
- Five rough sawn Douglas Fir wood trusses with PT 2"x 4" purlins
- 29 ga corrugated metal roof – Color – TBD
- Clean-up and grassing of disturbed areas

Total Price **\$ 98,500.00**

**Exclusions: Any and All Permit Fees
Stamped Drawings**

NOTE: All soil from site work is to be distributed on site

We Appreciate the Opportunity to Bid Your Work!

THE CITY OF GRANTVILLE, GEORGIA

**RESOLUTION NO. 2021-01
BEFORE THE CITY COUNCIL**

**A RESOLUTION APPROVING AND ADOPTING A
SCHEDULE OF FEES FOR DEVELOPMENT SERVICES AND
RESIDENTIAL AND NON-RESIDENTIAL BUILDING SERVICES**

WHEREAS, the Schedule of Fees for Development Services and Residential and Non-Residential Building Services presently utilized are outdated and not reflective of the costs incurred for the services provided.

NOW, THEREFORE, BE IT RESOLVED by the City Council of the City of Grantville that the Schedule of Fees for Development Services and Residential and Non-Residential Building Services listed in Exhibit A and Exhibit B attached hereto and incorporated herein as if set forth verbatim are approved and adopted for the City of Grantville.

This Resolution is passed this 26th day of April 2021.

Doug Jewell, Mayor

ATTEST

Roberta Higgins, City Clerk

Exhibit A
CITY OF GRANTVILLE, GEORGIA
SCHEDULE OF FEES FOR DEVELOPMENT SERVICES

I	<u>ANNEXATION</u>	\$200 / Acre	up to \$10,000
II	<u>REZONING</u>	\$200 / Acre	up to \$10,000
III	<u>VARIANCES</u>	\$250 per each request	
IV	<u>CONDITIONAL USE</u>	\$500 per each request	
V	<u>SUBDIVISION PLAT and PLAN REVIEWS</u> (Residential Development)		
	Concept Plat	\$440	plus \$3/ Lot
	Preliminary Plat	\$460	plus \$4/ Lot
	Constructions Plans	\$600	plus \$8/ Lot
	Final Plat	\$300	plus \$3/ Lot
	Landscape Plans	\$400	plus \$1/ Lot
	Additional Reviews	\$250	per each review
VI	<u>SUBDIVISION INSPECTIONS</u>		
	Clearing and Grading	\$1,500	plus \$20/acre for total acreage
	Roads	\$600	plus \$1/foot
	Storm Drainage	\$300	plus \$1/foot
	Detention	\$500	/ facility
	Water System	\$300	plus \$1/foot
	Sanitary Sewer System	\$500	plus \$1/foot
VII	<u>SITE PLAN REVIEWS</u> (Commercial, Industrial and Institutional Sites)		
	Conceptual Site Plans	\$150	plus \$20/acre
	Final Site Plans	\$500	plus \$20/acre
	Landscape Plans	\$300	plus \$20/acre
	Additional Reviews	\$250	each review
VII	<u>SITE DEVELOPMENT INSPECTIONS</u>		
	Clearing, Grading, & Improvements	\$2,400	plus \$50/acre
	Single-family Lot	\$1,200	each lot
	FINAL PLAT FILING FEE	\$100 plus \$10.00 per page	

Exhibit B
CITY OF GRANTVILLE, GEORGIA
Schedule of Fees for Residential and Non-Residential Building Services

RESIDENTIAL BUILDING FEES

Residential Building & Remodeling Permit Fees	
Single-family houses New Construction	Single Family House Site Plan and Zoning Review Fee \$50. \$0.37 per heated square foot (\$400 minimum) Costs for first required inspection included in fee. Re-inspections per Re-inspection fee schedule.
Single-family houses Major Repairs/ Additions/ Renovations	Single Family House Site Plan and Zoning Review Fee \$50. (\$50 minimum) plus \$0.37 per heated square foot. Costs for first required inspection included in fee. Re-inspections per Re-inspection fee schedule.
Permit for individual trades for minor renovations - Building Trades only	Minimum permit fee plus Repairs/Additions/ Renovations fee and Building Trades Inspection fee below
Building	\$5.00 per \$1,000 of construction value: \$75.00 minimum
Electrical	\$75.00
Mechanical / HVAC	\$75.00
Plumbing	\$75.00
Gas	\$75.00
Construction Plan Changes	\$50.00 plus \$5.00 per page
Multi-family Buildings: New Construction	
Minimum Permit Fee	\$300
Contract Amount	
0.00 to 10,000	\$300
10,000 to 50,000	\$400 for the first \$10,000 plus \$5.00 for each additional thousand or fraction thereof
50,000 to 100,000	\$500 for the first \$50,000 plus \$4.50 for each additional thousand or fraction thereof
100,000 to 250,000	\$625 for the first \$100,000 plus \$4.50 for each additional thousand or fraction thereof
250,000 to 500,000	\$1,225 for the first \$250,000 plus \$4.00 for each additional thousand or fraction thereof
500,000 and up	\$2,100 for the first \$500,000 plus \$3.50 for each additional thousand or fraction thereof
*Manufactured homes	\$0.37 per heated square foot
Manufactured homes- Grandfathered	\$250
Swimming pool and fence enclosure	\$150 Non-heated \$250 Heated

Exhibit B
CITY OF GRANTVILLE, GEORGIA
Schedule of Fees for Residential and Non-Residential Building Services

RESIDENTIAL BUILDING FEES

Outbuildings of 400 sq. ft. or less without utilities, Inspection Fee	Zoning Fee: \$15.00 Permit Fee: \$50.00 Inspection Fee: \$35.00
Outbuilding exceeding 400 sq. ft. without utilities, Inspection Fee	Zoning Fee: \$15.00 Minimum Permit Fee: \$50.00 plus \$0.15 per square foot Inspection Fee: \$35.00
Outbuildings with utilities, Inspection Fee	Zoning Fee: \$15.00 Permit Fee: \$50.00 plus \$0.20 per square foot Inspections Fee: \$35.00
Outbuildings Zoning Fee	\$15
Horse barns or similar structures including utilities	Zoning Fee: \$15.00 Permit Fee: \$50 plus \$0.20 per square foot Inspection Fee: \$35.00
Re-inspection Fee	\$50 for 1st failed inspection \$100 for 2nd failed inspection *** \$150 for 3rd and all subsequent failed inspections *** ***For same inspection.
Minimum permit fee, miscellaneous remodeling/construction	\$50
**Building Permit renewal	50% of original permit fee
Demolition Permit <i>Prior to issuance of permit, applicant is required to submit certification from qualified company or person that the structure has been examined for hazardous materials and hazardous materials will be removed in accordance with State Law prior to demolition activities.</i>	\$50
Certificate of Occupancy (CO)	\$100.00
Certificate of Occupancy Re-inspection, if required	\$50.00 (collected prior to CO issuance)

* If approved by Compatibility Review Committee

** Building Permits expire 6 months after issuance if construction has not begun since permit issuance.

Residential Site Development Permit (Foundation Permit)	
Site Development Foundation Plan Review	\$100 / Lot
Re-submittal Fee	\$50
Site Development Foundation Inspection	\$50

Transit Fee:	
---------------------	--

Exhibit B
CITY OF GRANTVILLE, GEORGIA
Schedule of Fees for Residential and Non-Residential Building Services

RESIDENTIAL BUILDING FEES

Move in House Transit Fee <i>Excludes and State or Federal permits, which may be required. Applicant is required to submit copies of State and Federal permits (if any required) to the City prior to issuance of this permit.</i>	\$100.00
Manufactured Home Transit Fee:	\$40.00

Zoning Fee:	
The zoning fee shall be applicable when covering new ground	\$25.00

Penalties (All Construction): Where work for which a permit is required by this code is started or proceeded prior to obtaining said permit, the fees herein shall be doubled, but the payment of such double fee shall not relieve any persons from fully complying with the requirements of the codes in the execution of the work nor from any other penalties prescribed herein.

Move In House Fee:	
Inspection fee prior to moving of structure (if applicable)	\$50.00
Building Permit Fee:	\$0.25 per square foot (\$200 minimum)

Coweta County Fire Service Impact Fee	
Fire Service Impact Fee	As determined by Coweta County

Fee Determination Examples:

- 1) New porch construction at residential property
 - \$50.00 Minimum permit fee for miscellaneous remodeling/construction
 - \$35.00 Inspection Fee, outbuildings without utilities
 - \$15.00 Zoning Fee
- 2) Replace porch at residential property
 - \$50.00 Minimum permit fee for miscellaneous remodeling/construction
 - \$35.00 Inspection Fee, outbuildings without utilities

NON-RESIDENTIAL BUILDING FEES

Non-Residential New Building Permit Fees	
Building Permit Administrative Fee	\$25.00
Building Permit Fee based on Total Valuation as determined by City Building Department	
Minimum Permit Fee	\$300

Exhibit B
CITY OF GRANTVILLE, GEORGIA
Schedule of Fees for Residential and Non-Residential Building Services

RESIDENTIAL BUILDING FEES

Contract Amount	
0.00 to 10,000	\$300
10,000 to 50,000	\$400 for the first \$10,000 plus \$5.00 for each additional thousand or fraction thereof
50,000 to 100,000	\$500 for the first \$50,000 plus \$4.50 for each additional thousand or fraction thereof
100,000 to 250,000	\$625 for the first \$100,000 plus \$4.50 for each additional thousand or fraction thereof
250,000 to 500,000	\$1,225 for the first \$250,000 plus \$4.00 for each additional thousand or fraction thereof
500,000 and up	\$2,100 for the first \$500,000 plus \$3.50 for each additional thousand or fraction thereof
Plan Review Fee	50% of permit fee
Plan Modifications	\$50 plus \$5 per affected plan sheet
Inspections (Required Inspections) Cost included for initial inspections in New Building Permit Fees	Fee for first inspection including in building permit fee above. Re-inspection per Re-inspection Fee Schedule. Required inspections: Building (4 inspections) Electrical (3 inspections) Plumbing (3 inspections) Mechanical (3 inspections) Gas (2 inspections) Fire Marshall (1 inspection) Final Inspection & Occupancy Limits determination
Re-inspection Fee	\$50 for 1st failed inspection \$110 for 2nd failed inspection \$160 for 3rd failed inspection \$210 for 4th and subsequent failed inspections

Note: Each building trade must call for and pass inspection prior to issuance of Certificate of Occupancy.

**Building Permits expire 6 months after issuance if construction has not begun since permit issuance.

**Building Permit renewal	50% of original permit fee
Certificate of Occupancy (CO)	\$100
Temporary or Partial Certificate of Occupancy (TCO)	\$75
Certificate of Occupancy Re-Inspection, if required	\$50 (collected prior to CO issuance)

Exhibit B
 CITY OF GRANTVILLE, GEORGIA
 Schedule of Fees for Residential and Non-Residential Building Services

RESIDENTIAL BUILDING FEES

Demolition Permit <i>Prior to issuance of permit, applicant is required to submit certification from qualified company or person that the structure has been examined for hazardous materials and hazardous materials will be removed in accordance with State Law prior to demolition activities.</i>	\$250.00
Temporary Structures	
Temporary Structures Permit/ Inspection Fee	\$100.00

Coweta County Fire Service Impact Fee	
Fire Service Impact Fee (Required for new Construction)	Fire Impact Fee is determined based on Coweta County Fee Schedule

Non-Residential Remodeling Permit Fees	
Building Permit Administrative Fee	\$25.00
Building Permit Fee based on value of Building Trades Required for project Fee based on cost for each building trade below:	Applicant must provide a detailed cost estimate for construction including a breakdown of costs for each building trade, (i.e., Building, Electrical, Plumbing, Mechanical, and Gas)
Minimum Permit Fee	\$300
Contract Amount	
0.00 to 10,000	\$300
10,000 to 50,000	\$400 for the first \$10,000 plus \$5.00 for each additional thousand or fraction thereof
50,000 to 100,000	\$500 for the first \$50,000 plus \$4.50 for each additional thousand or fraction thereof
100,000 to 250,000	\$625 for the first \$100,000 plus \$4.50 for each additional thousand or fraction thereof
250,000 to 500,000	\$1,225 for the first \$250,000 plus \$4.00 for each additional thousand or fraction thereof
500,000 and up	\$2,100 for the first \$500,000 plus \$3.50 for each additional thousand or fraction thereof
Plan Review Fee	50% of permit fee

Plan Modifications	\$50 plus \$5 per affected plan sheet
--------------------	---------------------------------------

Exhibit B
 CITY OF GRANTVILLE, GEORGIA
 Schedule of Fees for Residential and Non-Residential Building Services

RESIDENTIAL BUILDING FEES

Inspections (Required Inspections) Cost included for <u>initial</u> inspections in Remodeling Permit Fees	Fee for first inspection included in building permit fee above. Re-inspection per Re-inspection Fee schedule Required Inspections: Building (4 inspections) Electrical (3 inspections) Plumbing (3 inspections) Mechanical (3 inspections) Gas (2 inspections) Fire Marshall (1 inspection) Final Inspection & Occupancy Limits determination
Re-inspection Fee	\$50 for 1st failed inspection \$110 for 2nd failed inspection \$160 for 3rd failed inspection \$210 for 4th and subsequent failed inspections

Note: Each building trade must call for and pass inspection prior to issuance of Certificate of Occupancy.

**Building Permits expire 6 months after issuance if construction has not begun since permit issuance.

Temporary Sign Permit: Attached Sign Permit: Detached Sign Permit: Temporary Structure:	\$50.00 \$75.00 Based on construction cost for Commercial fees \$75.00
--	---

THE CITY OF GRANTVILLE, GEORGIA

**RESOLUTION NO. 2021-02
BEFORE THE CITY COUNCIL**

**A RESOLUTION APPROVING AND ADOPTING A
SCHEDULE OF FEES FOR CITY SERVICES**

WHEREAS, the Schedule of Fees for City Services presently utilized are outdated, do not comport with the current economic realities and not reflective of the cost incurred for the services provided.

NOW, THEREFORE, BE IT RESOLVED by the City Council of the City of Grantville, that the Schedule of Fees for City Services listed in Exhibit A attached hereto and incorporated herein as if set forth verbatim are approved and adopted for the City of Grantville.

This Resolution is passed this 26th day of April 2021.

Doug Jewell, Mayor

ATTEST

Roberta Higgins, City Clerk

City of Grantville

Grantville Rate/Fee Schedule

Resolution 2021-02 Exhibit A

ANIMAL CONTROL FEES

Impound Dogs	\$30 Initial pickup and Impound per dog \$18 each additional day Impounded
2 nd Offense	\$75 Per dog
3 rd Offense	\$150 Per dog

*Animals requiring vet services, owner will be responsible for all associated Cost prior to release of animal.

CEMETERY FEES - ANNEX A

Fee Schedule for the Purchase of Burial Plots - Annex A Grantville Cemetery

MUST SHOW PROOF OF RESIDENCY

Grantville City Resident:	\$500.00 per 5' x 11' Plot
Coweta County Resident:	\$750.00 per 5' x 11' Plot
Outside Coweta County:	\$1000.00 per 5' x 11' Plot

Plots shall be sold in increments of TWO (2) in Blocks H - R.

* Only Block G of Annex A shall be sold singularly.

Cemetery Deed Recording Fee	\$25
Cemetery Marker Placement Permit Fee	\$15

COURT FEES

Expungements (Each)	\$20
Certified Copies (Each)	\$3
Official Copies (Per page)	\$0.10
FTA Fee (Failure to Appear)	\$150
Contempt Charge	\$50
Video	\$10

FACILITIES RENTALS (CURRENTLY CLOSED)

Freight Depot

Four Hours- Rental Fee	\$50
Eight Hours- Rental Fee	\$100
\$100 Refundable Deposit	

Clements/Malcolm Recreation Building (when available)

Resident \$10 per hour	\$25 Refundable Deposit
Non-Resident \$25 per hour	\$25 Refundable Deposit

Grantville Community Center/Splash Park

Resident \$10 per hour	\$25 Refundable Deposit
Non-Resident \$25 per hour	\$25 Refundable Deposit

Water Pads are Not available for private rental

Pavilion Griffin Street - First come first Serve

*For rental at any facility, the deposit has to be PAID before the reservation date is booked.

OCCUPATIONAL TAXES

Occupational Tax Rates (Based on gross Receipts)

Class 1	1.00%
Class 2	1.33%
Class 3	1.66%
Class 4	2.00%
Class 5	2.33%
Class 6	2.66%

*Plus \$75 Administrative Fee

Payment is due each year within 30 days of January 1st. If unpaid within 90 days, on April 1st, a Penalty of 10% of the tax or fee due, plus Interest at a Rate of 1.5% per month thereafter will be assessed.

MISCELLANEOUS FEES

Credit Check Fee	\$15
Late Fee (Added at 8:00AM the morning of the next business day after the 15 th of each month)	\$25
Reconnect Fee (if not paid in full on the 24 th of the month)	\$25
Returned Check Fee	\$30
Re-Read Fee	\$25
Garbage Pickup (billing on utility bill)	\$14.18
Extra Garbage Can (per month)	\$9.73
Special Event Permit Fee	\$25
Parade/Assembly Permit Fee	\$25
Sign Permit	\$25
Copies (per page)	\$0.10
Fax (per page)	\$1
Copies of Meeting Recordings (Per Disk)	\$2
Notary (per page notarized)	\$2
Open Records Request	Associated Costs
Motorized Cart Permit	\$25
Retail Beer and Wine License Fee	\$250 each
Retail Liquor License Fee	\$5000
Beer and Wine Consumption on premises	\$525
Distilled Spirits (liquor) Consumption on premises	\$2000
Certificate of Appropriateness Application (Historical Preservation Commission)	\$20

UTILITY DEPOSITS - based on a Transunion credit check ordered by the Clerk on the date of application for the new account. The Deposit amount is credited to the account upon initial account set up and applied to the final bill when the account is closed.

<u>Service</u>	<u>Basic Deposit</u>	<u>Double Deposit (due to credit check)</u>
Electric	\$100	\$200
Water	\$50	\$100
Gas	\$100	\$200

Utility Deposits are \$250 or \$500 for all services; some locations are not serviced by all utilities. The above Utility Deposits are based on services that Grantville provides. Utility amounts per service are as listed above.

UTILITY TAP AND CUT-IN FEES

Residential

Gas Tap	
Without road or other bore	\$500 (plus cost of trenching)
With road bore	\$650 (plus cost of trenching)
Water Tap (fee update effective 9/28/2020)	
Water Tap (up to 1 Inch):	\$2,500
Water Tap (up to 1 Inch) w/Road Bore:	\$2,500 Plus Cost of Bore
Sewer Tap (up to 6 inches)	\$3000
Electric Cut-In Fees	
Up to 200 AMP overhead	\$350
Underground	\$2000 down payment; plus Final Bill at Cost

Commercial

Commercial all other taps and cut-ins not listed will be made At Cost; Labor and Materials, plus 10%.

Yard light install will be AT COST TO INSTALL and then the regular monthly fee.

Updated 4/8/2021

THE CITY OF GRANTVILLE, GEORGIA

ORDINANCE NO. 2021-02 BEFORE THE CITY COUNCIL

AN ORDINANCE TO RESTATE AND AMEND SECTION 11-21 SCOPE OF THE CODE OF ORDINANCES OF THE CITY OF GRANTVILLE

Section 11-21 Scope – State Minimum Standard Codes

- (a) Unless otherwise provided for by subsequent ordinance or another provision of this Code of Ordinances, the city hereby adopts and incorporates by reference, as fully as if set forth verbatim, the latest editions of the state minimum standard codes enumerated in O.C.G.A. §8-2-20(9)(B), as adopted and amended by the Department of Community Affairs.
 - (1) International Building code (ICC)
 - (2) International Residential Code for One and Two-Family Dwellings (ICC)
 - (3) National Electrical Code (NFPA)
 - (4) International Fuel Gas Code (ICC)
 - (5) International Mechanical Code (ICC)
 - (6) International Plumbing Code (ICC)
 - (7) International Energy Code Conservation Code (ICC)
 - (8) International Fire Code (ICC)
 - (9) International Swimming Pool and Spa Code (ICC)
- (b) Additionally, pursuant to O.C.G.A. §8-2-25, the city adopts and incorporates by reference, as fully as if set forth verbatim, the latest editions of the following codes:
 - a. International Property Maintenance Code (ICC)
 - b. Standard Housing Code (SBCCI)
 - c. Standard Swimming Pool Code (SBCCI)
- (c) If any of the publications listed in subsection (a) of this section are adopted as a state minimum code pursuant to O.C.G.A. §8-2-20 et seq., then the edition adopted by the state shall control. If any of the publications listed in subsection (a) of this section are less stringent than the state minimum codes promulgated pursuant to O.C.G.A. §8-2-20 et seq., then the state minimum code shall control.
- (d) The codes referenced in subsection (b) of this section shall mean the current edition of such codes as approved by the Georgia Department

of Community Affairs and shall include any amendments promulgated by the Georgia Department of Community Affairs.

- (e) The codes referenced in subsection (a) and (b) of the section shall be enforced by the City Manager, his designated representatives (Building Official and Code Enforcement Officer) or designee(s) thereof in accordance with the procedures hereinafter set forth.
- (f) A copy of each of the publications/ codes listed in subsection (a) and (b) are filed in the City Clerk's office and available for review by the public. The publications/ codes in subsections (a) and (b) are approved, adopted and incorporated by reference as fully as if set forth verbatim, and from the date on which this ordinance shall take effects the provisions thereof shall be controlling within the City.

Any and all ordinances or parts of ordinances in conflict are repealed.

First Reading: April 26, 2021

SO ORDAINED in lawful open session, this 24th day of May, 2021.

Doug Jewell
Mayor

Attest:

Roberta Higgins
City Clerk

ORDINANCE NO. 2021-01

AN ORDINANCE TO AMEND THE EMPLOYEE HANDBOOK OF THE CITY OF GRANTVILLE SO AS TO ADD PRESIDENT'S DAY AND VETERAN'S DAY AS OBSERVED CITY HOLIDAYS; AND FOR OTHER PURPOSES

WHEREAS, Section 3.08(4) of the Charter of the City of Grantville provides that the council may adopt such personnel policies as may be necessary to provide for adequate and systematic handling of the personnel affairs of the City of Grantville; and

WHEREAS, the current Employee Handbook was adopted by Ordinance on December 28, 1998; and

WHEREAS, the Council has determined that the City should observe additional city holidays;

The Mayor and Council of the City of Grantville, Georgia hereby ordain as follows:

Section 1: That the Employee Handbook provision HOLIDAYS is amended to add the following to the list of holidays observed by the City:

President's Day
Veteran's Day

Section 2

That any and all ordinances and parts of ordinances, policies, etc. in conflict herewith are hereby waived to the extent of the conflict.

FIRST READING: March 22, 2021

SO ORDAINED in lawfully open session, this ____ day of April, 2021.

MAYOR

Attest: _____

City of Grantville

123 LaGrange Street
P.O. Box 160
Grantville, GA 30220

770-583-2289
Telephone

770-583-2280
Telefax

February 8, 2021

Ms. Sallie Coleman, CFO
Electric Cities of Georgia
1470 Riveredge Parkway
Atlanta, Georgia 30328

Dear Ms. Coleman,

Please accept this letter as the City of Grantville's request to opt out of paying for Economic & Community Development immediately. We understand it will not be effective until the end of June 2023.

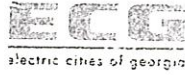
However, the City of Grantville does not desire to pay for services that have not benefited the City in the past nor appears to have any benefit in the future.

Thank you for your assistance and cooperation.

Sincerely,

Doug Jewell
Mayor

DJ/jp



Grantville						
Services	FY22 Prelim Budget	FY21 Final Budget	FY20 Final Budget	FY19 Final Budget	FY18 Final Budget	FY10 Final Budget
Analytical Services	\$ 19,691	\$ 23,349	\$ 21,976	\$ 18,039	\$ 15,517	\$ 13,204
Engineering & Energy Services	3,755	5,951	9,169	10,451	15,514	16,826
Education, Training & Development	7,548	5,968	5,992	5,927	5,946	5,758
Joint Purchasing	-	2,360	2,379	2,281	1,468	2,552
Aggregated Services						
<i>Meter Testing</i>	1,700	1,675	1,500	1,460	1,500	852
<i>Tree Trimming</i>	1,700	1,675	1,500	1,460	1,500	811
<i>Pole Inspection & Treatment</i>	-	-	-	-	-	-
<i>Padmount Inspection</i>	-	-	-	-	-	-
Hosted Solutions						3,338
<i>Work Order Management (CIS)</i>	-	-	-	-	3,000	-
<i>Inventory/Materials Management</i>	-	-	-	-	-	-
<i>Fixed Asset Work Order Management (CMMS)</i>	-	-	-	-	-	-
<i>Outage Tracking (OTS)</i>	-	-	-	-	-	-
Pole Attachment Services (PAS)	1,743	1,573	1,721	1,684	1,728	-
Legislative & Regulatory	987	946	980	873	838	810
Economic & Community Development	8,784	8,114	8,204	5,699	5,827	9,830
Reserve Options						
Education, Training & Development Fund	\$ -	\$ -	\$ -	\$ -	\$ -	\$ -
Total Member Budget	\$ 45,908	\$ 51,611	\$ 53,421	\$ 47,874	\$ 52,838	\$ 53,981
Total ECG Budget	\$ 7,985,079	\$ 7,507,388	\$ 7,666,849	\$ 7,209,467	\$ 7,032,060	\$ 6,953,882